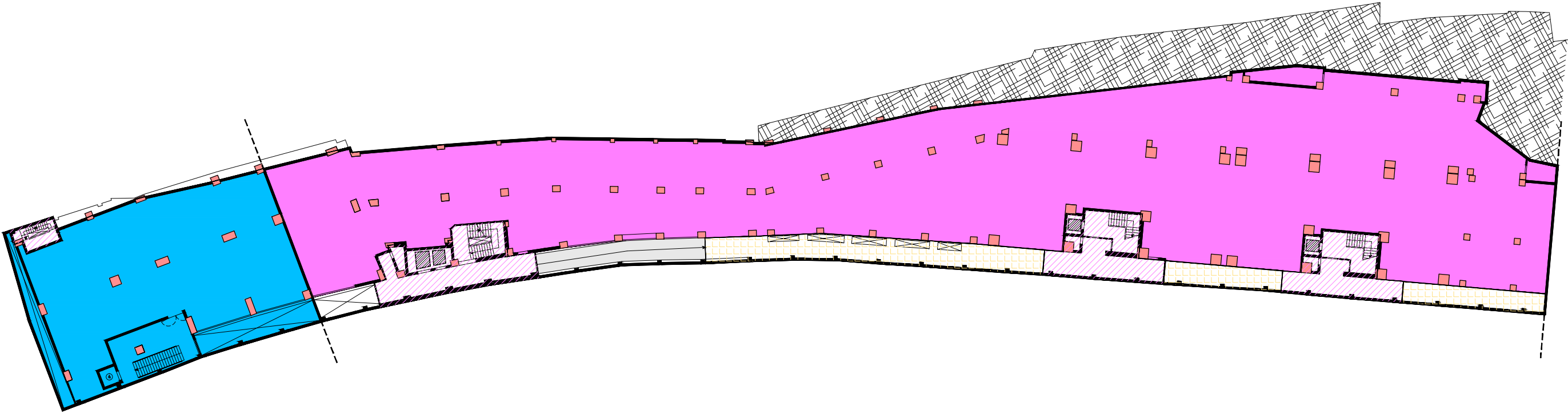

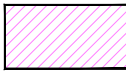


RAGUSA CENTRO

PIANO SECONDO SOTTOSTRADA
(PIANO A QUOTA 498,75)

-2



	SUP. DESTINATA AL COMUNE	mq	614,41		SUP. ARCHIVIO	mq	2.310,91
					SUP. ESTERNA CARRABILE	mq	194,63
					SUP. SCALE E ATRI	mq	285,76